



House - Semi-Detached (EPC Rating: C)

CLEMENCE ROAD, DAGENHAM, RM10 9YQ

£475,000



4 Bedroom House - Semi-Detached located in Dagenham

FULLY MODERNISED FOUR bedroom semi-detached house in lovely quiet location. The house benefits from TWO good size reception rooms, DOWNSTAIRS WC, FOUR bedrooms (one with EN-SUITE) and family bathroom. There is an INTEGRAL GARAGE, this could be converted into a room (STPP) Lovely back garden with side access.

ENTRANCE LOBBY

Cloakroom/WC

DINING AREA

18 x 16

Understairs cupboard, open to...

LOUNGE AREA

17 x 16

Patio doors to garden.

KITCHEN

10'6 x 9'2

Newly fitted with high gloss base/wall units, integrated appliances, door to garden.

LANDING

Window to side, loft access.

BEDROOM ONE

11 x 10'2

Window to front, access to ...

EN-SUITE

Shower cubicle, basin, WC.

BEDROOM TWO

12'6 x 10

Window to front.

BEDROOM THREE

11'8 x 6'2

Window.

BEDROOM FOUR

7'8 x 9'7

Window to front.

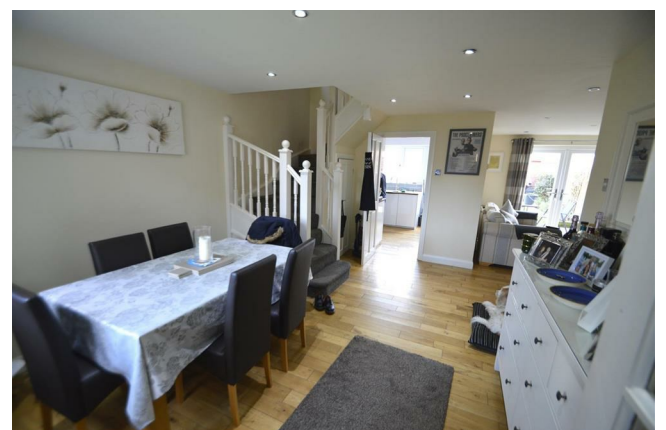
BATHROOM

Three piece suite, tiled walls, window.

EXTERIOR

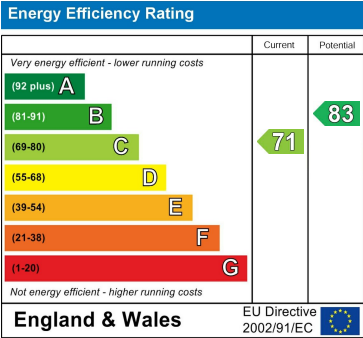
Good size front garden, with own drive to integral garage. Side access to lovely back garden with patio area, borders etc. shed.

We routinely refer potential purchasers to Move with Us Ltd. It is your decision whether you choose to deal with Move with Us Ltd. In making that decision, you should know that we receive an annual payment benefits from Move with Us Ltd, equating to approximately £314.48 per referral.



Council Tax Band
D

Energy Performance Graph



Call us on
020 8593 5933
dagenham@steps.me.uk
www.steps.me.uk

Agents Note: Whilst every care has been taken to prepare these particulars, they are for guidance purposes only. All measurements are approximate and are for general guidance purposes only and whilst every care has been taken to ensure their accuracy, they should not be relied upon and potential buyers are advised to recheck the measurements.